

## ISOLBAEND V

### SELF-ADHESIVE BAND FOR THE SCREEDS' VERTICAL DECOUPLING

Neoprene self-adhesive band for the vertical decoupling of the floating screeds from the vertical partitions.

### THERMAL PERFORMANCES

DESCRIPTION	SYMBOL	M.U.	VALUE	NORMS	NOTES
Thermal Conductivity	( $\lambda$ )	W/mK	0,034		Supplier data sheet
Thermal Resistance	(R)	m <sup>2</sup> K/W	0,088		Calculated value
Thermal Transmission	(U)	W/m <sup>2</sup> K	11,363		Calculated value

### PHYSICAL-MECHANICAL PERFORMANCES

DESCRIPTION	M.U.	VALUE	TOLERANCES
Density	Kg/m <sup>3</sup>	65	
Thickness (test method ISO 1923)	mm	3	(2,6 mm - 3,5 mm)

DESCRIPTION	M.U.	VALUE	NORMS
Colour	-	BLACK	
Heat resistance	°C	Up to + 105	
Cold resistance	°C	Up to -50	
Fire rating		1	UNI 8457 e UNI 9174
Resistance factor to steam diffusion	$\mu$	$\geq 5000$	DIN 52615
Water absorption after 28 days		< 1.1 % del volume	
Adhesive type		Synthetic	
Liner		Silicone paper	



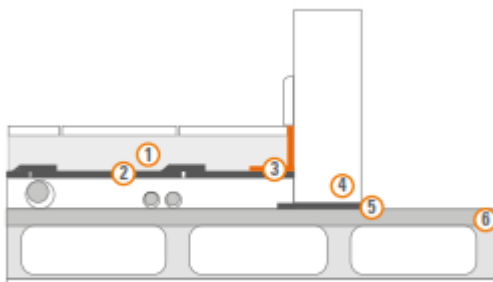
## CHEMICAL PERFORMANCES

CHARACTERISTIC	PERFORMANCES
Chemical interactions	Highly resistant to acids and alkaline detergents, retains its characteristics unchanged over time
Electrostatic	Does not accumulate static charge and prevent interaction between materials
Environmental sustainability	100 % recyclable

## SPECIFICATION

The acoustic insulation from vibrations coming from non supporting internal vertical partitions, necessary to complete the floating floor system for impact sound noises acoustic insulation, obtained by laying a vertical overlapping band of elastic-resilient material of 65 kg/m<sup>3</sup> specific weight made up of a neoprene resin self-adhesive on one side, such as ISOLBAEND V by VALLI ZABBAN.

## APPLICATION – FLOOR



- 1) Screed
- 2) Resilient material (against impact sound noise)
- 3) ISOLBAEND V
- 4) Wall
- 5) ISOLBAEND
- 6) Concrete layer

## APPLICATION TYPE

Perimeter area

### APPLICATION METHOD

Once having laid the impact sound noise insulating product, apply the self-adhesive ISOLBAEND V in the corner between the insulating product and the vertical partitions for the floating screed's resilient material fl

## DIMENSIONS AND PACKAGING – ROLLS

SIZE	M.U.	VALUE
Thickness	mm	3
Roll height	cm	20
Roll length	m	10

Rev. 4 – 10/20